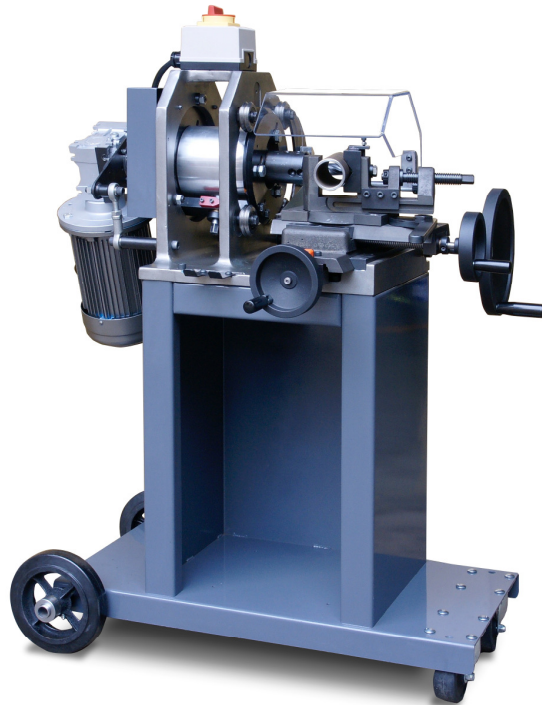


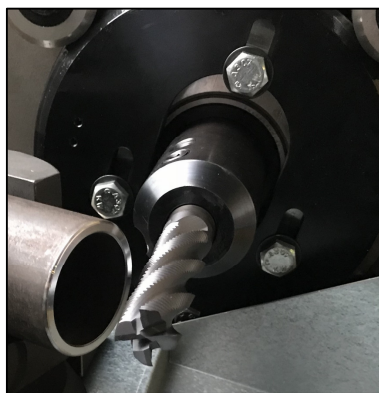
LPN-2018 Pipe & Tube Notcher



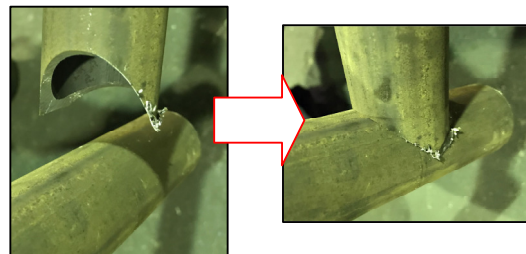
FEATURES:

- End mill type.
- **Tooling-free design:** No need to change mill head. One notches various arcs according to the OD of the pipe that is going to be welded on.
- Notching capability from OD 1" to 3".
- Capable for Miter and offset notching to 60°.
- Cross slide table, angle vise, and V-Jaws can be independently calibrated allowing accurate positioning of straight, angled, or offset notches.
- Vise quick changeover for different diameters of tube and pipe.
- **Decimal angle-finder** enables you to work your way up to the right notch angle to produce a tighter fit and a better weld without wasting material on trial and error.
- A sheet metal stand with wheels and casters for easier mobility.
- Single phase 110V. Convenient for operation everywhere.

Suitable for: Structural work, racing and off-road chassis, steam pipe, and many more tube & pipe related applications.



End Mill



The eccentric cut feature, allows the user to feed an end mill cutter through an adjustable eccentric path. Creating a perfect weld joint when mating two or more pieces of tubing together.

SPECIFICATIONS		LPN-2018	
Notching Capacity (OD)	25.4 mm to 76.2 mm	1" to 3"	
Milling Head Size	25.4 mm	1"	
Milling Speed	177 rpm		
Motor	1HP		
Voltage	110V / 220V 1PH		
Shipping Dimensions (L x W x H)	1676 mm x 1118 mm x 1524 mm	66" x 44" x 60"	
Shipping Weight	278 kgs	610 lb	